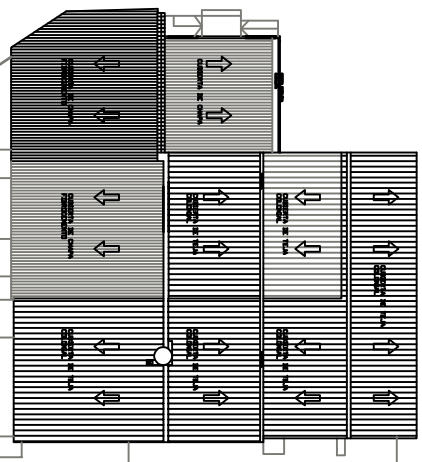
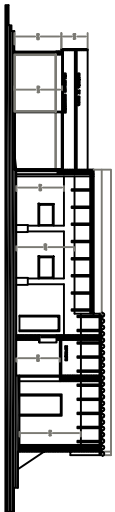


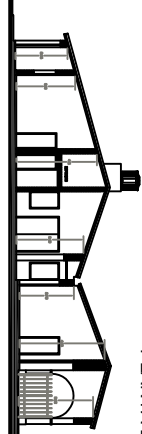
PLANTA



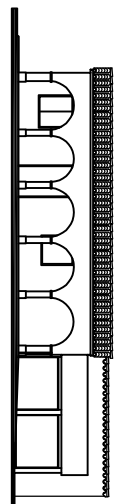
PLANTA DE TECHOS



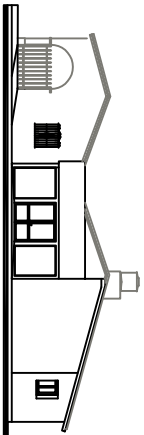
CORTE A - A



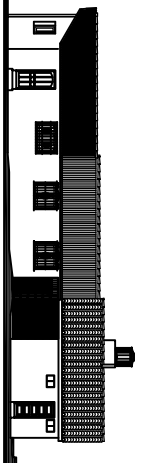
CORTE B - B



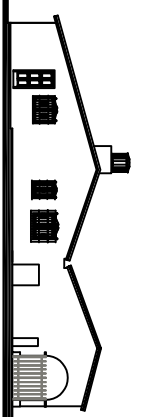
VISTA OESTE - Calle San Martin



VISTA SUR -Calle Mariano Moreno



VISTA ESTE



VISTA NORTE

D:\COMPARTIR\Municipalidad S.L\EDIFICIO MUNICIPAL_VMG_20230314_131152_131157.jpg

D:\COMPARTIR\Municipalidad S.L\EDIFICIO MUNICIPAL_VMG_20230314_131152_131157.jpg

GALERIA OESTE A CALLE SAN MARTIN

FRENTE NORTE

D:\COMPARTIR\Municipalidad S.L\EDIFICIO MUNICIPAL_VMG_20230314_131152_131152.jpg

FRENTE ESTE Y NORTE

D:\COMPARTIR\Municipalidad S.L\EDIFICIO MUNICIPAL_VMG_20230314_114751.jpg

FRENTE NORTE

D:\COMPARTIR\Municipalidad S.L\EDIFICIO MUNICIPAL_VMG_20230314_114751.jpg

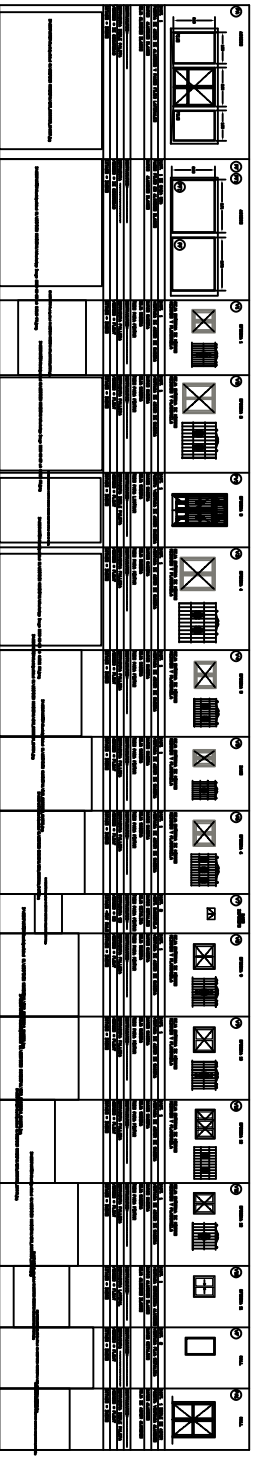
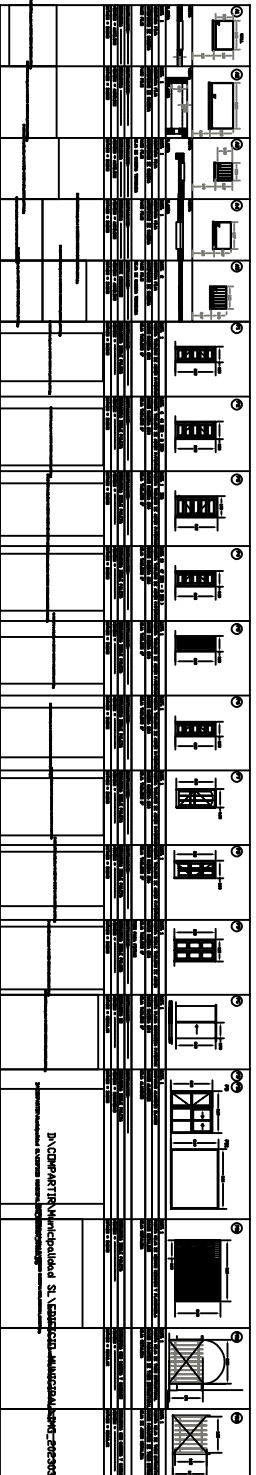
FRENTE ESTE - GALERIA ACCESO PERSONAL

D:\COMPARTIR\Municipalidad S.L\EDIFICIO MUNICIPAL_VMG_20230314_114751.jpg

FRENTE ESTE

D:\COMPARTIR\Municipalidad S.L\EDIFICIO MUNICIPAL_VMG_20230314_114751.jpg

FRENTE SUR



PLANILLA DE CARPINTERIAS

PLANILLA DE LOCALES

| ITEM | DESCRIPCION | MATERIAL | CANTIDAD | UNIDAD | VALOR UNITARIO | VALOR TOTAL |
|------|-------------|----------|----------|---------|----------------|-------------|
| 1 | PUERTAS | ALUMINIO | 10 | PUERTA | 150000 | 1500000 |
| 2 | VENTANAS | ALUMINIO | 20 | VENTANA | 75000 | 1500000 |
| 3 | REJILLAS | ALUMINIO | 10 | REJILLA | 150000 | 1500000 |
| 4 | REJILLAS | ALUMINIO | 10 | REJILLA | 150000 | 1500000 |
| 5 | REJILLAS | ALUMINIO | 10 | REJILLA | 150000 | 1500000 |
| 6 | REJILLAS | ALUMINIO | 10 | REJILLA | 150000 | 1500000 |
| 7 | REJILLAS | ALUMINIO | 10 | REJILLA | 150000 | 1500000 |
| 8 | REJILLAS | ALUMINIO | 10 | REJILLA | 150000 | 1500000 |
| 9 | REJILLAS | ALUMINIO | 10 | REJILLA | 150000 | 1500000 |
| 10 | REJILLAS | ALUMINIO | 10 | REJILLA | 150000 | 1500000 |
| 11 | REJILLAS | ALUMINIO | 10 | REJILLA | 150000 | 1500000 |
| 12 | REJILLAS | ALUMINIO | 10 | REJILLA | 150000 | 1500000 |
| 13 | REJILLAS | ALUMINIO | 10 | REJILLA | 150000 | 1500000 |
| 14 | REJILLAS | ALUMINIO | 10 | REJILLA | 150000 | 1500000 |
| 15 | REJILLAS | ALUMINIO | 10 | REJILLA | 150000 | 1500000 |
| 16 | REJILLAS | ALUMINIO | 10 | REJILLA | 150000 | 1500000 |
| 17 | REJILLAS | ALUMINIO | 10 | REJILLA | 150000 | 1500000 |
| 18 | REJILLAS | ALUMINIO | 10 | REJILLA | 150000 | 1500000 |
| 19 | REJILLAS | ALUMINIO | 10 | REJILLA | 150000 | 1500000 |
| 20 | REJILLAS | ALUMINIO | 10 | REJILLA | 150000 | 1500000 |
| 21 | REJILLAS | ALUMINIO | 10 | REJILLA | 150000 | 1500000 |
| 22 | REJILLAS | ALUMINIO | 10 | REJILLA | 150000 | 1500000 |
| 23 | REJILLAS | ALUMINIO | 10 | REJILLA | 150000 | 1500000 |
| 24 | REJILLAS | ALUMINIO | 10 | REJILLA | 150000 | 1500000 |
| 25 | REJILLAS | ALUMINIO | 10 | REJILLA | 150000 | 1500000 |
| 26 | REJILLAS | ALUMINIO | 10 | REJILLA | 150000 | 1500000 |
| 27 | REJILLAS | ALUMINIO | 10 | REJILLA | 150000 | 1500000 |
| 28 | REJILLAS | ALUMINIO | 10 | REJILLA | 150000 | 1500000 |
| 29 | REJILLAS | ALUMINIO | 10 | REJILLA | 150000 | 1500000 |
| 30 | REJILLAS | ALUMINIO | 10 | REJILLA | 150000 | 1500000 |

| ITEM | DESCRIPCION | MATERIAL | CANTIDAD | UNIDAD | VALOR UNITARIO | VALOR TOTAL |
|------|-------------|----------|----------|---------|----------------|-------------|
| 1 | PUERTAS | ALUMINIO | 10 | PUERTA | 150000 | 1500000 |
| 2 | VENTANAS | ALUMINIO | 20 | VENTANA | 75000 | 1500000 |
| 3 | REJILLAS | ALUMINIO | 10 | REJILLA | 150000 | 1500000 |
| 4 | REJILLAS | ALUMINIO | 10 | REJILLA | 150000 | 1500000 |
| 5 | REJILLAS | ALUMINIO | 10 | REJILLA | 150000 | 1500000 |
| 6 | REJILLAS | ALUMINIO | 10 | REJILLA | 150000 | 1500000 |
| 7 | REJILLAS | ALUMINIO | 10 | REJILLA | 150000 | 1500000 |
| 8 | REJILLAS | ALUMINIO | 10 | REJILLA | 150000 | 1500000 |
| 9 | REJILLAS | ALUMINIO | 10 | REJILLA | 150000 | 1500000 |
| 10 | REJILLAS | ALUMINIO | 10 | REJILLA | 150000 | 1500000 |
| 11 | REJILLAS | ALUMINIO | 10 | REJILLA | 150000 | 1500000 |
| 12 | REJILLAS | ALUMINIO | 10 | REJILLA | 150000 | 1500000 |
| 13 | REJILLAS | ALUMINIO | 10 | REJILLA | 150000 | 1500000 |
| 14 | REJILLAS | ALUMINIO | 10 | REJILLA | 150000 | 1500000 |
| 15 | REJILLAS | ALUMINIO | 10 | REJILLA | 150000 | 1500000 |
| 16 | REJILLAS | ALUMINIO | 10 | REJILLA | 150000 | 1500000 |
| 17 | REJILLAS | ALUMINIO | 10 | REJILLA | 150000 | 1500000 |
| 18 | REJILLAS | ALUMINIO | 10 | REJILLA | 150000 | 1500000 |
| 19 | REJILLAS | ALUMINIO | 10 | REJILLA | 150000 | 1500000 |
| 20 | REJILLAS | ALUMINIO | 10 | REJILLA | 150000 | 1500000 |
| 21 | REJILLAS | ALUMINIO | 10 | REJILLA | 150000 | 1500000 |
| 22 | REJILLAS | ALUMINIO | 10 | REJILLA | 150000 | 1500000 |
| 23 | REJILLAS | ALUMINIO | 10 | REJILLA | 150000 | 1500000 |
| 24 | REJILLAS | ALUMINIO | 10 | REJILLA | 150000 | 1500000 |
| 25 | REJILLAS | ALUMINIO | 10 | REJILLA | 150000 | 1500000 |
| 26 | REJILLAS | ALUMINIO | 10 | REJILLA | 150000 | 1500000 |
| 27 | REJILLAS | ALUMINIO | 10 | REJILLA | 150000 | 1500000 |
| 28 | REJILLAS | ALUMINIO | 10 | REJILLA | 150000 | 1500000 |
| 29 | REJILLAS | ALUMINIO | 10 | REJILLA | 150000 | 1500000 |
| 30 | REJILLAS | ALUMINIO | 10 | REJILLA | 150000 | 1500000 |

HALL DE ESPERA HACIA ACCESO

HALL DE ESPERA HACIA EL INTERIOR

HALL DE ACCESO HACIA EL ACCESO EXTERIOR

D:\COMPARTIR\Municipalidad S.L\EDIFICIO MUNICIPAL_VMG_20230314_131157.jpg

FRENTE SUR DESDE EL OESTE

D:\COMPARTIR\Municipalidad S.L\EDIFICIO MUNICIPAL_VMG_20230314_11584.jpg

FRENTE SUR

D:\COMPARTIR\Municipalidad S.L\EDIFICIO MUNICIPAL_VMG_20230314_11584.jpg

FRENTE SUR

PROVINCIA DE SANTA
MUNICIPALIDAD DE SAN LORENZO
RELEVAMIENTO DE EDIFICIOS EXISTENTES
CATASTRO 34.999
PLANO: RELEVAMIENTO EDIFICIO MUNICIPAL
ESCALA: 1:100 FECHA: 28/3/2023 DIBUJO: CS
CESAR SPIRITO - arquitecto FIRMA: **04**